



**BLOCK &
HARDSCAPE**

Family Owned Since 1946

CMU Color
+ Finish Guide



► Concrete Masonry Unit Color Guide

For use with ORCO CMU Spec Guide,
Featuring Precision, Split Face, Burnish, Shot Blast, and Slump Finishes

ORANGE / LOS ANGELES

11100 BEACH BOULEVARD
STANTON • CA 90680
OFFICE: 714.527.2239

INLAND EMPIRE

4510 RUTILE STREET
RIVERSIDE • CA 92509
OFFICE: 951.685.1521

COACHELLA / IMPERIAL

35-240 DILLON ROAD
INDIO • CA 92201
OFFICE: 760.347.4000

SAN DIEGO

3501 OCEANSIDE BLVD
OCEANSIDE • CA 92056
OFFICE: 760.757.1780

ORCO.COM

▶ CMU Product Data Sheet

Applies to all configurations, textures, and colors | LW, MW, and NW mix densities | Hi-Stress 3,250 PSI available

Product Name

- **CMU – Concrete Masonry Units**
For Buildings (below and above grade). Fully grouted.

Quality Assurance

- Certifications: Concrete blocks shall conform to **ASTM C90** latest edition. Units may contain pre-consumer and post-consumer recycled content. Contact your ORCO Architectural Rep for details.
- ORCO CMU are produced from regional materials and offer high thermal mass properties. CMU contain no VOC's, are mold resistant and provide low life cycle costs. CMU are available in a wide variety of colors and textures.

Fire Resistance

- Per 2022 CBC Table 722.3.2 Minimum Equivalent Thickness (inches) of Bearing or Nonbearing Concrete Masonry Walls.
- Refer to [CMHA Tek 07-01D Fire Resistance Ratings of Concrete Masonry Assemblies](#) for more details.

Field Constructed Mock-ups

- Construct a sample panel, no less than 4'x4' for the colors and patterns to be used in the project.
- Variegated colors to have a minimum of 4'x8' mock-up wall. Panel will be used to represent product and workmanship expected for the project. Either the project owner or the architect must approve the panel.
- Full-size units are preferred to illustrate color and texture for approval.

Delivery, Storage & Handling

- ORCO CMU shall be delivered to the jobsite on wooden pallets. Store pallets in single stacks on level ground and cover with waterproof covering during inclement weather. Handle carefully to avoid breakage and damage to the finished surfaces.

Installation

- Protect work by covering walls each day to keep open cells protected and dry.
- Protect installed units from damage by other trades performing operations that can stain or otherwise damage the finished surfaces and corners.

Sealer/Cleaner

- Use non-acidic cleaners suitable for use with concrete masonry products.
- Use breathable, water based, low-VOC sealers where specified.

Products Covered

- Includes all structural, load-bearing, fully grouted masonry units, including closed ends, open ends, double open ends, halves, U-lintels, deep U's, pilasters, and bond beams.

General Submittal Instructions

- Submit product data sheet, certifications and samples for each specified color and texture.

Manufacturer & Locations

ORCO Block & Hardscape
orco.com

ORANGE / LOS ANGELES

11100 BEACH BOULEVARD
STANTON • CA 90680
OFFICE: 714.527.2239

COACHELLA / IMPERIAL

35-240 DILLON ROAD
INDIO • CA 92201
OFFICE: 760.347.4000

INLAND EMPIRE

4510 RUTILE STREET
RIVERSIDE • CA 92509
OFFICE: 951.685.1521

SAN DIEGO

3501 OCEANSIDE BLVD
OCEANSIDE • CA 92056
OFFICE: 760.757.1780

WARNING

This product can expose you to Silica, crystalline (airborne particles or respirable size) which is known to the State of California to cause cancer. For more information go to www.p65Warnings.ca.gov.

► Precision Finish

STOCK



Natural Gray MW



Natural Gray MW
Indio*



Tan MW



Tan MW Indio*

**Available only from Indio plant.
Additional freight charges may apply.*

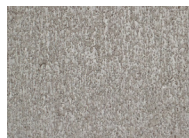
SPECIAL ORDER



White MW



Sterling MW



Natural Gray LW



Nufad MW



Altura MW



Wheat MW



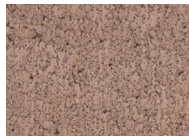
Sourdough MW



California Gold MW



Brown MW



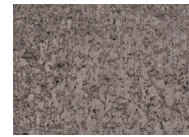
Chocolate MW



Portola MW



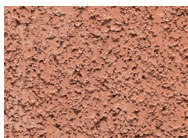
Otay Brown MW



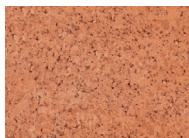
Purple MW



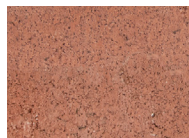
Red Brown MW



Valley Red MW



Orange MW



Laterite MW



Red MW



Red 250 MW



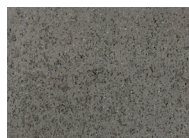
Ladera Red MW



Black 100 LW



Black 100 MW



Black 250 MW



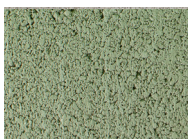
Black 500 LW



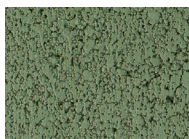
Jet Black MW



Black 500 MW



Laurel MW



Cobra MW

Common Configurations: 8x8x16, 8x4x16, 6x8x16, 12x8x16, Veneer Caps

All colors available in all configurations. See Spec Guide for more information

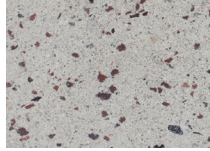
*Per-unit costs vary based on factors such as mix design, block weight, and color.
Not all configurations available as stock.
Always verify color and texture with physical samples. Contact ORCO for pricing and availability.*

► Split Face Finish

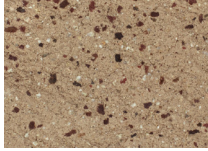
STOCK



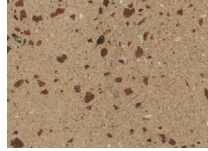
Natural Gray MW



Natural Gray MW
Indio*



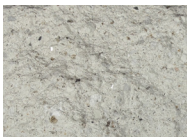
Tan MW



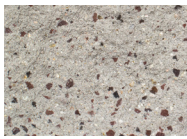
Tan MW Indio*

**Available only from Indio plant.
Additional freight charges may apply.*

SPECIAL ORDER



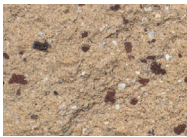
White MW



Sterling MW



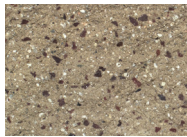
Natural Gray LW



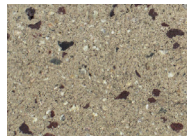
Nufad MW



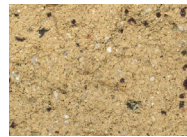
Altura MW



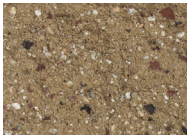
Wheat MW



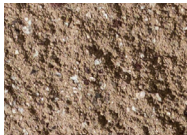
Sourdough MW



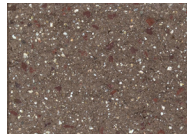
California Gold MW



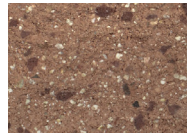
Brown MW



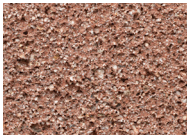
Portola MW



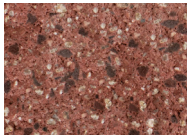
Otay Brown MW



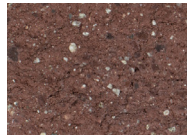
Red Brown MW



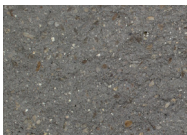
Valley Red MW



Red 250 MW



Ladera Red MW



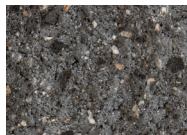
Black 100 LW



Black 100 MW



Black 250 MW



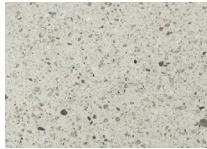
Jet Black MW

Common Configurations: 8x8x16, 8x4x16, 6x8x16, 12x8x16, Veneer Caps

All colors available in all configurations. See Spec Guide for more information

▶ Burnish Finish

SPECIAL ORDER



White MW



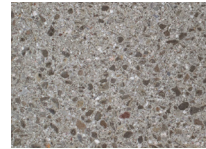
Sterling MW



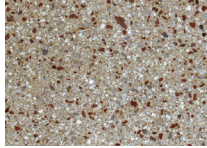
Natural Gray NW



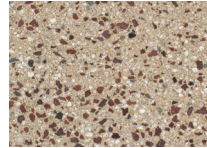
Natural Gray MW



Natural Gray LW



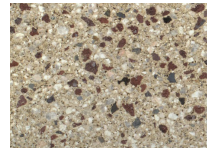
Tan MW



Nufad MW



Wheat LW



Sourdough MW



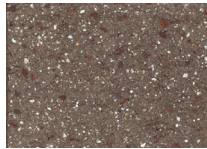
California Gold MW



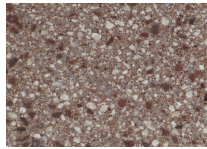
Wheat MW



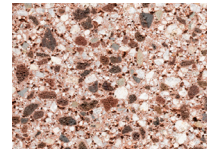
Brown MW



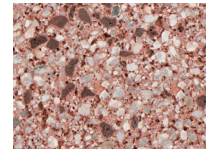
Otay Brown MW



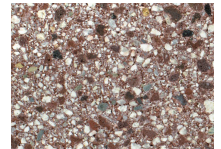
Red Brown MW



Valley Red MW



Red 250 MW



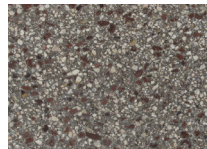
Ladera Red MW



Black 100 LW



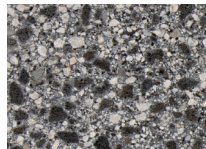
Black 100 MW



Black 250 MW



Black 500 LW



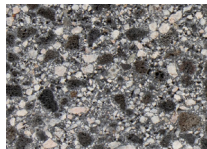
Jet Black MW



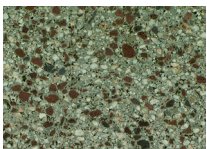
Sterling MW
Black Cinders



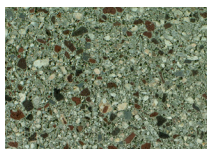
Wheat MW
Black Cinders



Jet Black MW
Black Cinders



Laurel MW



Cobra MW

Common Configurations: 8x8x16, 8x4x16, 6x8x16, 12x8x16, Veneer Caps

All colors available in all configurations. See Spec Guide for more information

*Per-unit costs vary based on factors such as mix design, block weight, and color.
Not all configurations available as stock.
Always verify color and texture with physical samples. Contact ORCO for pricing and availability.*

▶ Shot Blast Finish

SPECIAL ORDER



White MW



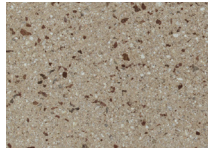
Sterling MW



Natural Gray MW



Natural Gray LW



Tan MW



Nufad MW



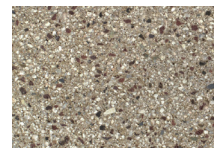
Wheat MW



Sourdough MW



California Gold MW



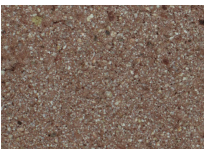
Wheat MW



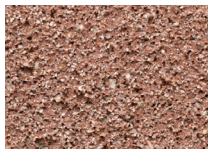
Brown MW



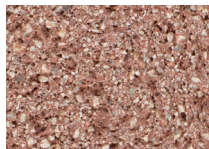
Otay Brown MW



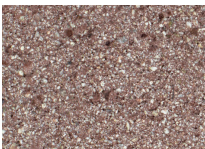
Red Brown MW



Valley Red MW



Red 250 MW



Ladera Red MW



Black 100 LW



Black 100 MW



Black 250 MW



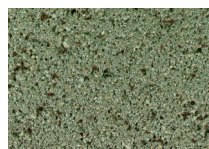
Black 500 LW



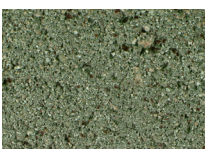
Jet Black MW



Sterling MW
Black Cinders



Laurel MW



Cobra MW

Common Configurations: 8x8x16, 8x4x16, 6x8x16, 12x8x16, Veneer Caps

All colors available in all configurations. See Spec Guide for more information

▶ Slump / Variegated / Cinders & Pumice

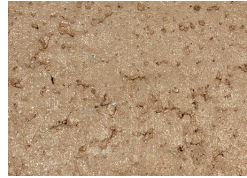
SLUMP BLOCK (NW)



San Juan Slump



La Paz Slump



Mission Slump



Buff Slump



White Slump



Natural Gray
Slump Shot Blast



Natural Gray Slump

VARIEGATED



Manchester MW Split Face



Borrego MW Split Face



Manor MW Split Face

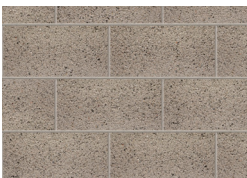


Tuscany MW Split Face

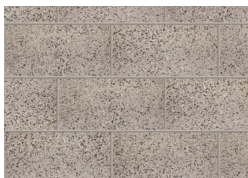


Versante MW Split Face

CINDERS & PUMICE (MW)



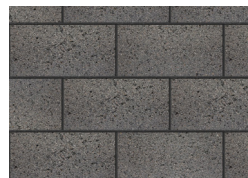
Sterling
Black Cinders Shot Blast



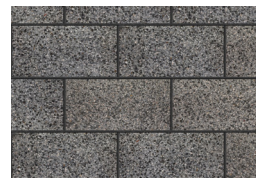
Sterling
Black Cinders Burnish



Natural Gray
White Pumice



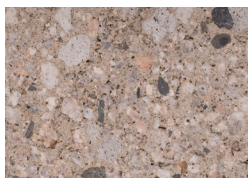
Jet Black
Black Cinders Shot Blast



Jet Black
Black Cinders Burnish



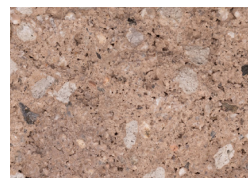
Natural Gray
Black Cinders Shot Blast



Natural Gray
Pumice Burnish



Natural Gray
Black Cinders Burnish



Tan
Pumice Split Face



Wheat
Black Cinders Burnish

*Per-unit costs vary based on factors such as mix design, block weight, and color.
Not all configurations available as stock.
Always verify color and texture with physical samples. Contact ORCO for pricing and availability.*



NOTE: FINISHES OTHER THAN PRECISION CARRY ADDITIONAL COSTS AND LEAD TIMES



ORCO.COM