

MORTAR & GROUT HIGHLIGHTS

Masonry Mortars



TYPE-S STD



Most commonly used

TYPE-S MAC



Adds efflorescence reducers, longer board life

TYPE-S IWR



For water repellent applications

TYPE-M



Higher compressive strength

Dry preblended mortars for general use with block, brick, and stone.

- Blended at the factory
- More consistent sand for faster & better tooling
- Excellent bond strength
- Wide array of colors

Bonding Mortars



VBM



For veneer applications

POLY VBM 300 & 500



High bond strength for medium bed

VBM THIN SET



For tile applications

POLY VBM BONDER



Highest bond strength for thin bed

Polymer-enhanced mortars specializing in bonding masonry veneers and pavers to a variety of surfaces.

- High shear bond strength
- Extra tack and non-sag properties
- Low shrinkage

Paver Sand



APEX POLYMERIC



NEW low dust technology

Best quality joint fill for interlocking concrete pavers and slabs, wet-cast pavers, and natural stone. Ideal for use in public walkways and pool decks.

Base Mortars



DECK MUD



Also useful for rock bed applications

Creates thick leveling mortar beds with high flexural strength and impact resistance. Poly Deck Mud is used in the ORCO Paver Bonding System.

Joint Grouts



VP JOINT GROUT



Ideal for narrow joints - from 1/8" to 5/8"

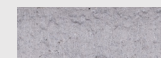
MAC PLUS



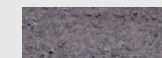
Best pointing mortar

Specialty mortars designed to fill grout joints for tile, stone, brick, masonry veneers and pavers.

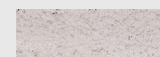
POPULAR MORTAR COLORS



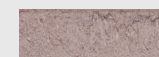
NATURAL GRAY



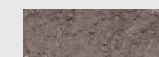
BLACK 250



SOFT WHITE



TAN



OTAY BROWN

VIEW CATALOG FOR ALL PRODUCTS



Waterproofing

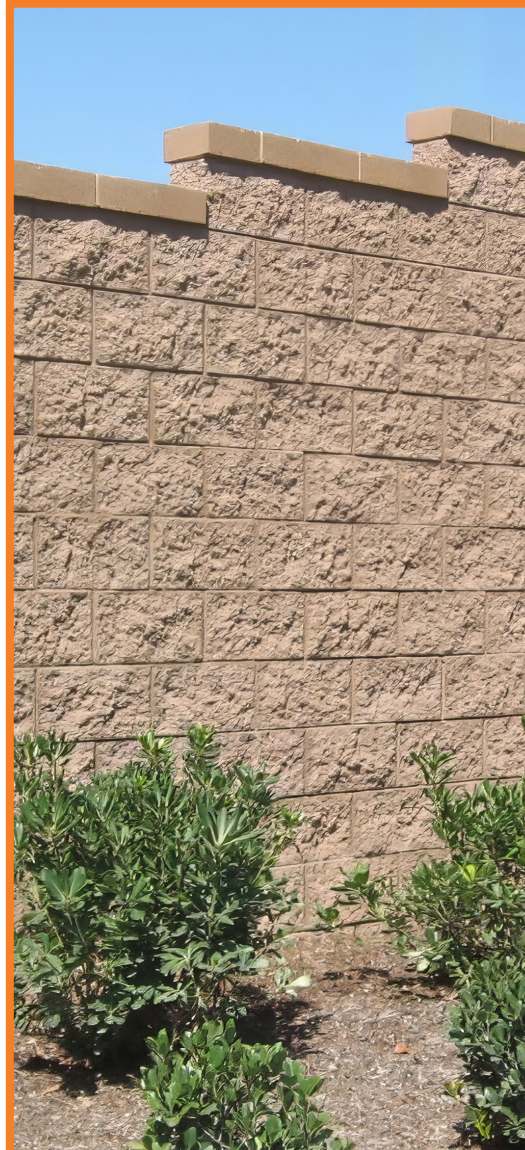


OBP Mortars & Grouts Are Everywhere:

Pavers



Concrete Block



Veneers



Porcelain & Natural Stone



ORCO BLOCK & HARDSCAPE

4545 RUTILE STREET | RIVERSIDE, CA | 92509

(951) 685-8498 | INFO@ORCO.COM